







# Sentinel Products

## Wi-Fi® Based Sensor Solutions



### Comparison of Software models

Aginova offers the most efficient system for our sensors in your environment. The product line varies from a simple network with sensors connected to the Web to a fully integrated solution on your own server. For a quick start without complex configuration, we recommend the Web-hosted Edition.

	Web Hosted Free	Web Hosted Pro	Desktop Silver	Desktop Gold	Enterprise Hosted	Enterprise On-Site
<b>Description:</b>	Web application, managed by Aginova on a shared server		Software Application, directly installed by Customer on a local PC.		Web application, managed by Aginova on a dedicated server	Web application, installed & managed by customer
<b>Overview:</b>						
Server location	Aginova	Aginova	Customer PC	Customer PC	Aginova	Customer's servers
Single station			•	•		
Database support	Managed	Managed	Built-in	Built-in, MySQL	Managed	Oracle, MySQL, PostgreSQL
Supported Platforms						
Max number of sensors	5	250	20	25-50 <sup>1</sup>	N/A <sup>2</sup>	N/A <sup>1</sup>
Data retention	1-day	unlimited	1 year	1 year	unlimited	unlimited
Internet access needed	•	•			•	
Remote Access	•	•			•	•
<b>Quality:</b>						
24/7 monitoring		•			•	
SLA <sup>3</sup>		•			•	
Auditing		•			•	•
<b>Access Level:</b>						
Groups / Access control		•			•	•
Administrator Access						•
<b>Sensor features:</b>						
Graphs	•	•	•	•	•	•
Data visualization	•	•	•	•	•	•
CSV Export		•		•	•	•
Reports		•			•	•

	Web Hosted Free	Web Hosted Pro	Desktop Silver	Desktop Gold	Enterprise Hosted	Enterprise On-Site
<b>Customization:</b>						
Customize interface, logos					•	•
<b>Alarms:</b>						
Setup alarms		•		•	•	•
Send email/SMS		• <sup>4</sup>		• <sup>4</sup>	• <sup>4</sup>	• <sup>4</sup>
Max alarms escalations		3			3	3
Alarm schedules		•			•	•
<b>Visualization:</b>						
Maps	•	•	1	1	•	•
Google Maps	•	•			•	•
RTLS support <sup>5</sup>					•	•
<b>Tools:</b>						
Network quality report APIs		•			•	•
<b>Ease of installation</b>	★★★★★	★★★★★	★★★★	★★★★	★★★★	★



Need web browser to access



Windows XP, 2000, NT



Mac OS X Version 10.4 minimum



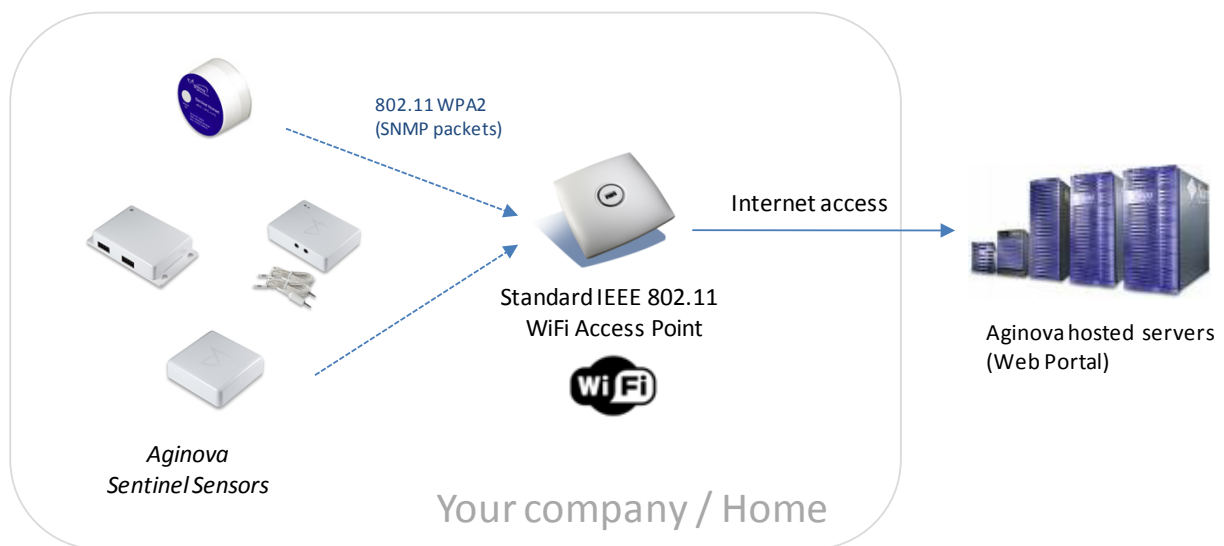
Tested on Ubuntu Linux only

## Web Hosted Edition

(Aginova hosts your data on a shared server)

We recommend this setup as the simplest introduction to our Wi-Fi based sensor network. This scenario only requires our sensors, deployed within your existing Wi-Fi infrastructure.

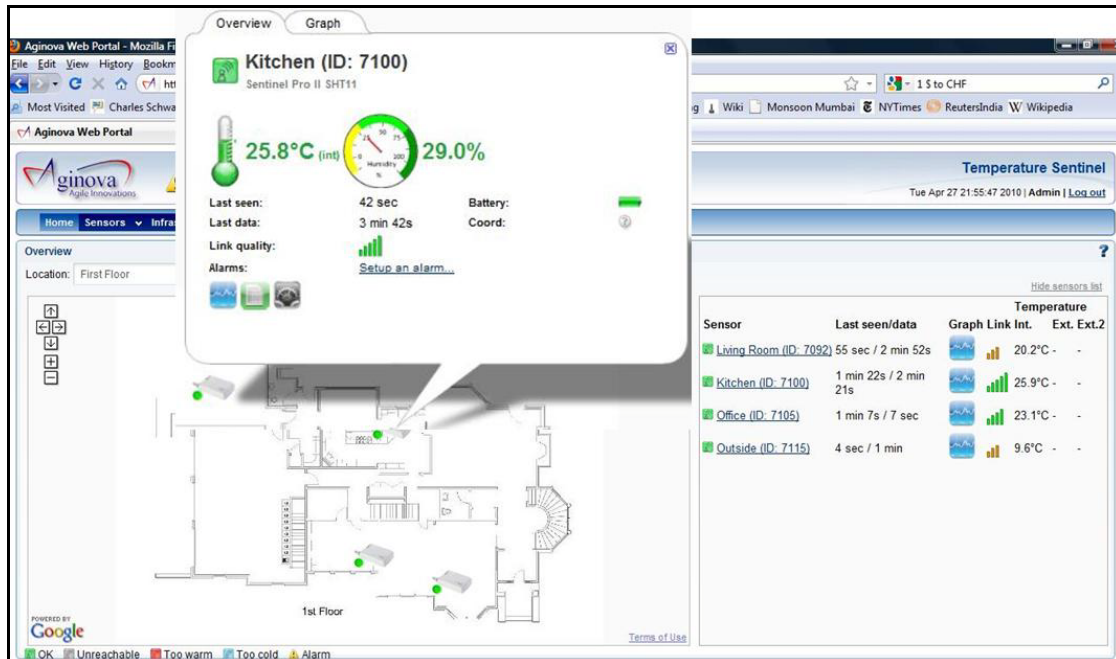
There are no servers or databases to manage in the Web Hosted Edition. The sensors simply send the data to one of our hosted servers, where you can access the data from anywhere in the world with an Internet connection.



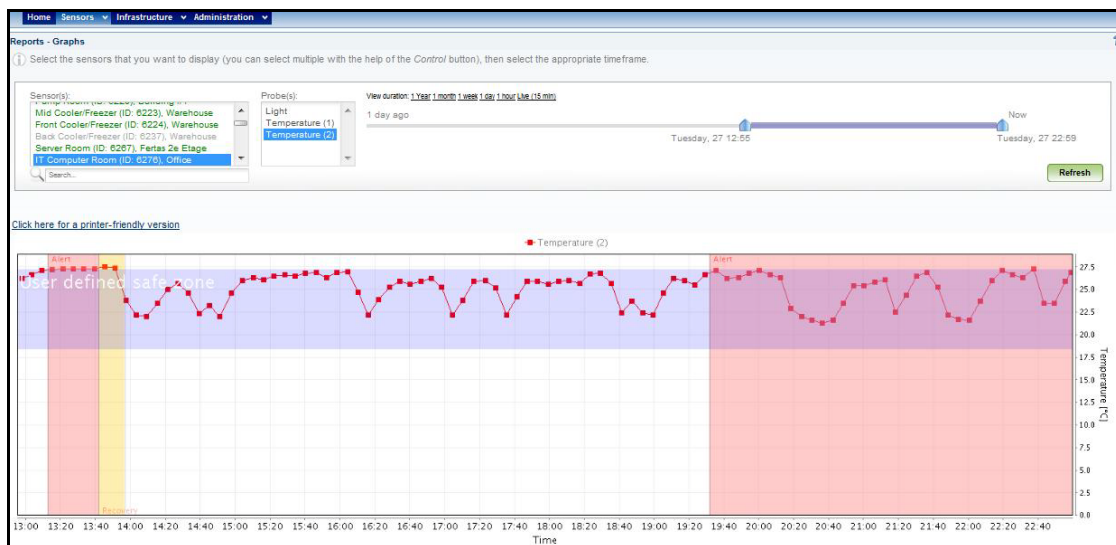
Recommended for:

- Evaluation of Sentinel sensors
- Low number (1 to 30) of sensors
- If you have limited IT support and require web access for setups

Examples of screen shots of the web portal showing sensor data is shown:



(Home page on the web portal showing list of sensors and the placement of sensors on a map)



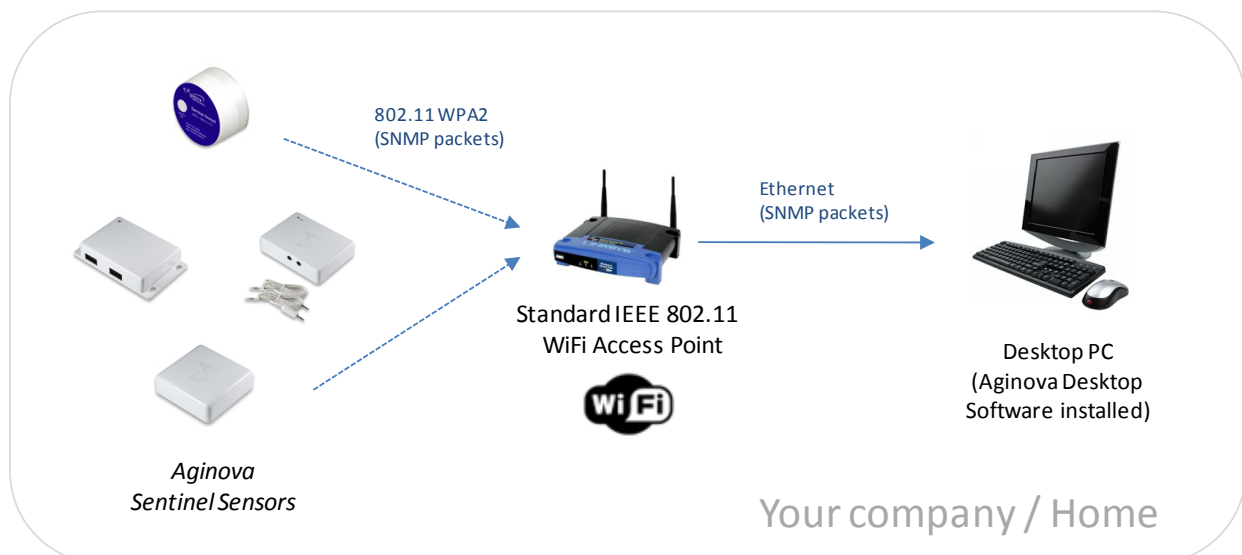
(Sensor data shown graphically on a web portal with alerts/alarms shown on the graph)

## Desktop Edition (Silver or Gold)

(PC Software Application)

The Desktop Edition provides a user-friendly way to use your own PC to collect data from your sensors. To deploy the Desktop Edition, install a Windows application on your PC to view incoming data through an existing Wi-Fi network. The sensors automatically send information to the program, where you can connect to our Web Portal and view graphs and reports\* and configure alarms\*. These customized alerts sound when a reading is above a given value, making it easy to regulate your environment.

The picture below illustrates a typical network, where the sensors use your existing Wi-Fi network to send data to the Aginova software installed on your PC.

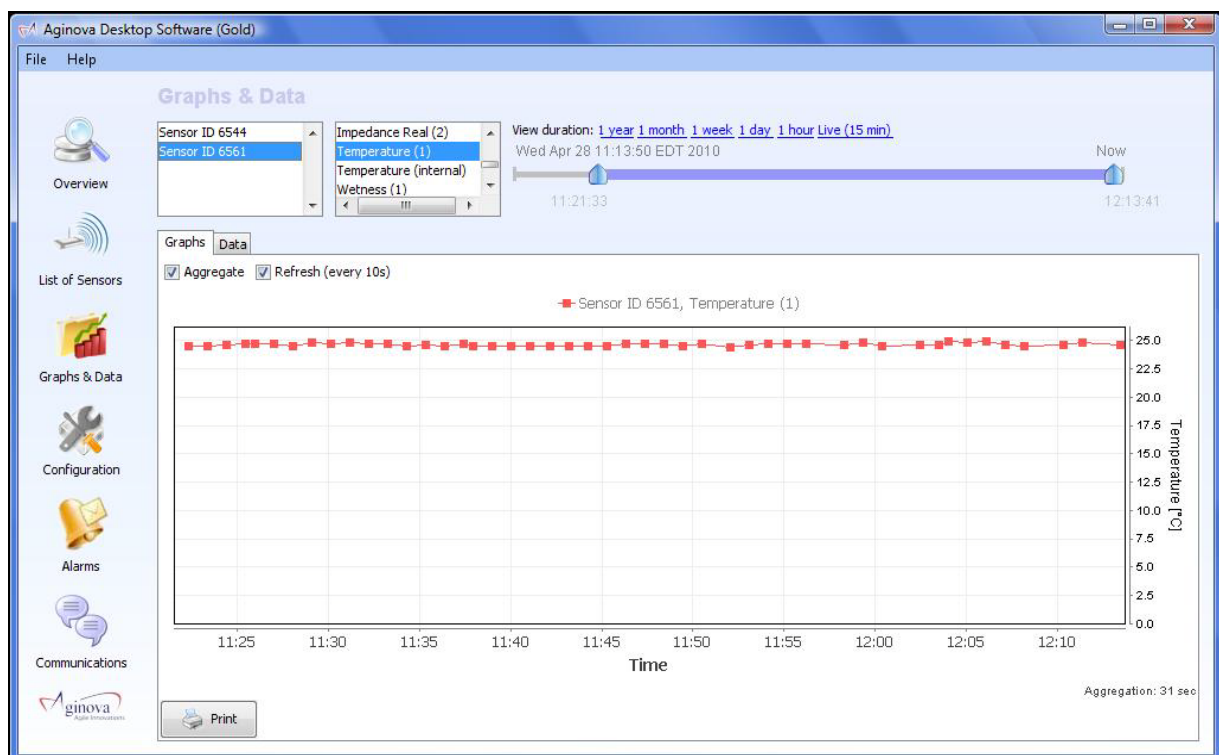
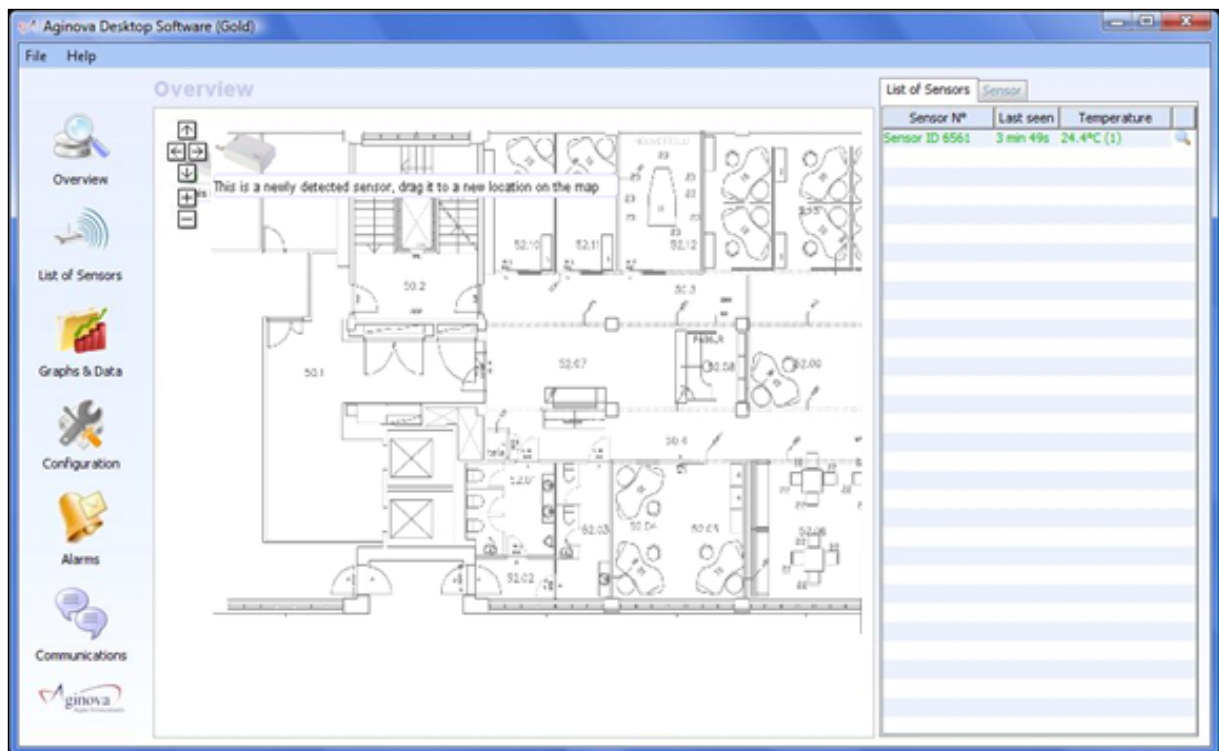


\*Only available for the Gold version

Recommended for:

- Evaluation of our sensors
- Low number of sensors
- Setups which do not require web access

Examples:

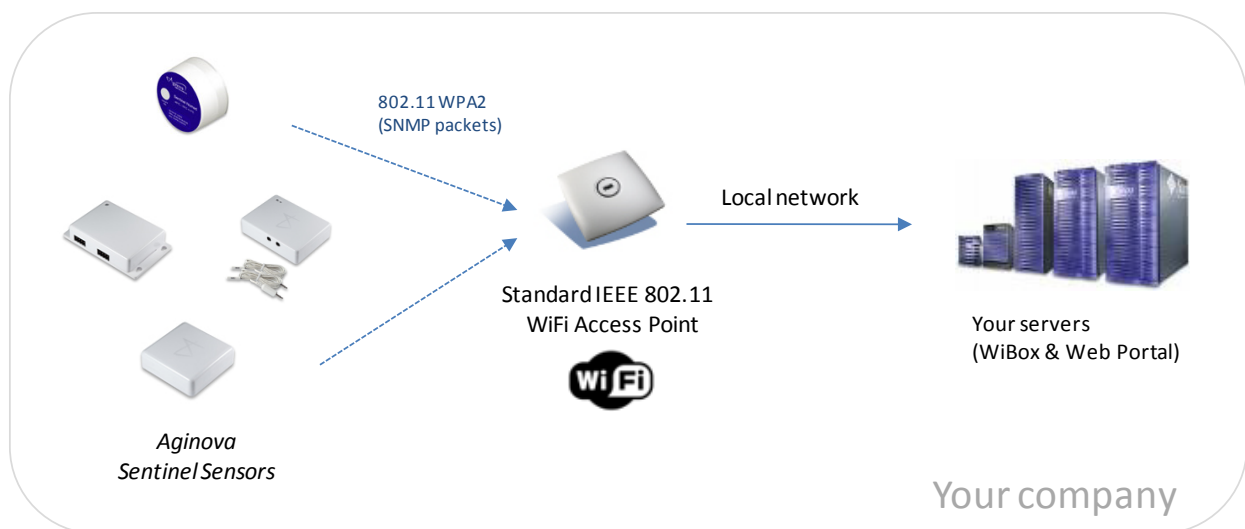


(Screenshots from the Desktop Software)

## Enterprise On-Site Edition

(Complete system within your organization)

For convenience and security, Aginova offers full control of data through the Enterprise On-Site Edition. This type of installation is elaborate and requires considerable time and effort, but may work best for your organization if you plan to manage both the sensors and server on your premises. The dataflow is the same as for “Web Hosted Edition”. The only difference is the servers are on site.



Recommended for:

- Large number of sensors
- Increased security
- Possible integration and customization with other existing systems
- Setups which require only internal web access

## Enterprise Hosted Edition

(Aginova hosts your data on a dedicated server)

Enterprise Hosted Edition is an extension of the Web Hosted Edition in which a fully dedicated server, owned and maintained by Aginova. Deploy the sensors on your existing Wi-Fi infrastructure and receive data on our hosted server. Access the data from anywhere with an Internet connection without maintaining complicated IT infrastructure.

Recommended for:

- Large number of sensors
- Setups which require web access
- Outsource the management and maintenance of sensors

## About Aginova

Aginova Inc. is a wireless sensor network solution provider. The Company will provide the packaged wireless sensor hardware with the data acquisition and management software using leading-edge Internet and Web technologies.

Find more information on our website [www.aginova.com](http://www.aginova.com).

Contact us:

### U.S. Office:

Aginova Inc.  
2226 Central Ave., Suite One  
Middletown, OH 45044  
Phone: +1 513 727 1984  
Fax: +1 732 879 0248  
[info \(at\) aginova.com](mailto:info(at)aginova.com)

### European Office:

Aginova Sàrl  
PSE-D, EPFL  
CH-1015 Lausanne, Switzerland  
Phone: +41 21 693 8691  
Fax: +41 21 693 8692  
[info-ch \(at\) aginova.com](mailto:info-ch(at)aginova.com)

---

1 For extended monitoring time, please call

2 Only limited by server capacity

3 Service Level Agreement (SLA) available upon request only, otherwise Best Effort is applied

4 SMS Requires separate contract with SMS provider

5 Real Time Location System (RTSL) requires third-party software